



INDUSTRIAL WASTEWATER STORAGE

FORGED FOR TOUGHNESS, BUILT TO LAST



With decades of proven expertise, FORGE™ specializes in manufacturing high-quality industrial wastewater storage tanks engineered for performance and reliability. Our experience in designing and constructing durable, code-compliant systems enables us to deliver solutions that support wastewater treatment processes, protect environmental resources, and ensure long-term performance with minimal maintenance.

Why Choose FORGE?

FORGE™ is trusted by industrial operators and engineers for our proven expertise in bolted wastewater storage tanks. We collaborate closely with project teams to simplify system design, provide stamped foundation drawings, and deliver tanks that meet AWWA D103 and NSF-61/372 standards for wastewater treatment and process applications

Custom-engineered Storage Tanks

Engineered for industrial wastewater treatment, process water, and chemical storage applications, FORGE tanks meet the most demanding environmental and regulatory requirements, including AWWA D103, NSF-61/372, and other international codes

Advantages:

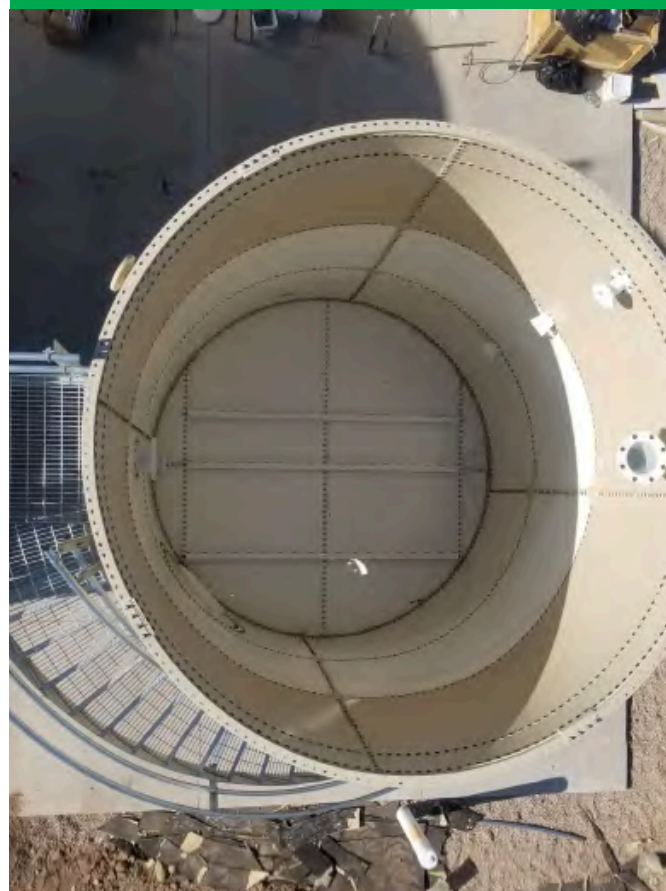
- FORGESHIELD™ powder epoxy coating delivers superior corrosion resistance while keeping life cycle costs low
- Modular bolted design allows construction in virtually any weather, minimizing delays
- Dedicated project management and engineering ensure safe, efficient project delivery
- Tanks designed for safe construction practices, reducing risk and downtime

High-Quality Construction & Durability

FORGE™ industrial storage tanks are manufactured from premium-grade steel and protected with our advanced FORGESHIELD™ epoxy coating, providing unmatched resistance to corrosion, abrasion, and aggressive wastewater contents. Designed for decades of service, our tanks deliver reliable performance while minimizing long-term maintenance costs.

Best in Class

When you partner with FORGE, you get more than just products—you get peace of mind. Our certified and trained team manages every aspect of your project, from design to installation. We ensure the highest safety standards with the use of jack systems during installation, guaranteeing both the safety of our crew and the successful completion of your project.



Key Benefits Include:

- AWWA D103 & NSF-61/372 Certified – full compliance with U.S. and international standards
- FORGESHIELD™ Powder Epoxy Coating – unmatched resistance to corrosion, abrasion, and aggressive wastewater contents
- Fast, Modular Installation – bolted tank designs with safe jack system methods minimize downtime and site risk
- Dedicated Engineering & Project Management – stamped foundation drawings and end-to-end project support included

Tank Material Options at a Glance:



MATERIAL OPTIONS

- ✓ Stainless steel
- ✓ Factory-coated carbon steel
- ✓ Galvanized steel
- ✓ Aluminum

CAPACITY SPECIFICATIONS

- ✓ Standard diameters available from 9' (2.8m) to 148' (45m)
- ✓ Factory welded diameters from 6' to 15' Priority Support
- ✓ Standard designs: AWWA D103-09, NFPA, ADP, NSF
- ✓ Standard tank capacities range from 4,000 to 3 million US gallons (15m3 to 11,000m3)

BOTTOM OPTIONS

- Steel
- ✓ Flat
- ✓ 1:12 sloped
- ✓ Drop Bottom™
- ✓ 1:120 crowned
- ✓ Embedded ring (concrete bottom)

HARDWARE SPECIFICATIONS

- ✓ Hot-dipped galvanized
- ✓ Encapsulated nuts and bolts available
- ✓ EPDM gaskets standard
- ✓ Specialty gaskets available for high temperatures or special contents

Built to Perform

FORGE™ industrial wastewater tanks integrate seamlessly into treatment facilities and process systems. Built to AWWA D103 and NSF-61/372 standards, they withstand abrasion, aggressive contents, and harsh environments while delivering decades of reliable service with minimal maintenance. With stamped foundation drawings and full project support, FORGE ensures compliance, safety, and efficiency every time.

Ready to FORGE Ahead?

Contact us today to learn more about how FORGE'S solutions can safeguard your assets and set a new standard for durability and performance in your industrial wastewater storage systems.



FORGE-Global.com
713.637.8778
24275 Katy Fwy Ste. 250
Katy, TX 77494



Design Standards

At FORGE, safety is our priority. Every installation is carried out by trained, FORGE-certified crews who follow strict safety protocols. Using advanced equipment like jack systems, we ensure stability and minimize risks. Our commitment to both safety and quality guarantees efficient, secure project completion.

The Green Choice

By eliminating in-field painting and sandblasting, FORGE tanks reduce harmful silica dust, overspray, and site disturbance — making our wastewater storage systems a safer, more sustainable choice.